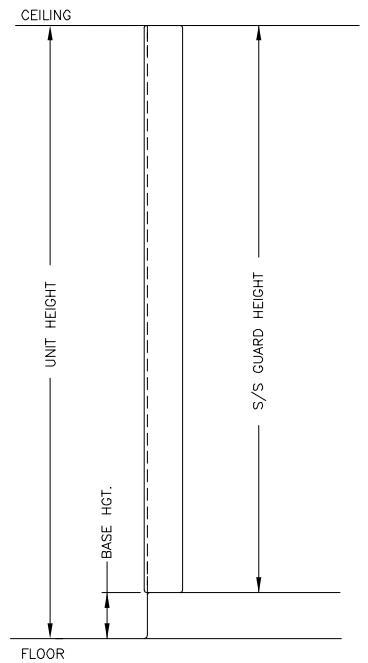
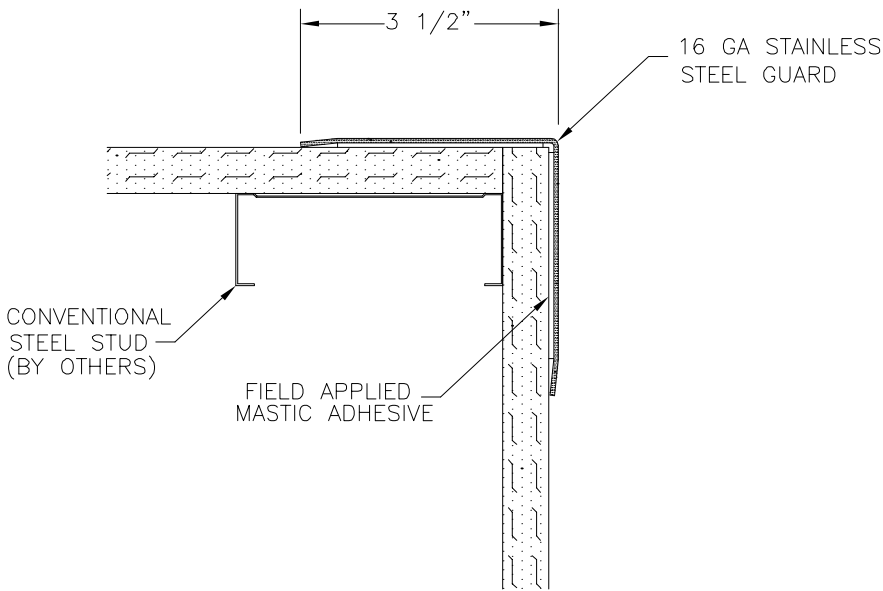
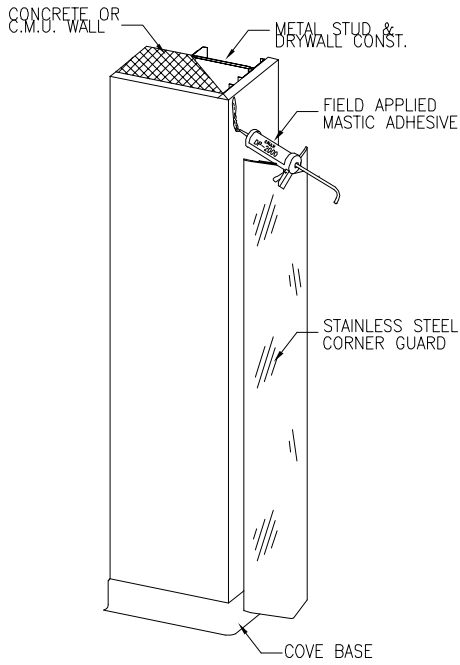


STAINLESS STEEL GUARDS TO BE
 16 GA, TYPE #304 ALLOY WITH
 #4 SATIN FINISH, SHIPPED WITH
 PROTECTIVE STRIPPABLE COATING.

UNITS REQ'D	UNIT HEIGHT	S/S CG HEIGHT	BASE HGT.



STAINLESS STEEL GUARD
 AT FULL HEIGHT ELEVATION

C0-8

C/S GROUP

MUNCY, PA 17756
 VISTA, CA 92083
 MISSISSAUGA, ONTARIO, CANADA

PROJECT:		REV. :
LOCATION:		F&F:
CUSTOMER:		SHEET OF
AGENT:		JOB NO.
DWG. BY:	DATE:	

SECTION 10260
SUGGESTED SPECIFICATIONS

Part 1 - General

1.01 Summary

- A. This section includes the following types of wall protection systems:
- B. Corner Guards
- C. Related Sections: The following sections contain requirements related to this section:
 - 1. Handrails, Bumper Guards, Crash Rails, Accent Rails; refer to section 10260 "Wall and Corner Guards"
- D. Blocking in walls for fasteners; refer to section 09250 "Gypsum Board Systems"
- E. Wall Covering, Wall Panels, Door Protection; refer to section 09720 "Wall Coverings"

1.02 References

- A. American Society for Testing and Materials (ASTM)

1.03 Submittals

- A. General: Submit the following in accordance with conditions of contract and Division 1 specification section 01300.
- B. Product data and detailed specifications for each system component and installation accessory required, including installation methods for each type of substrate.
- C. Shop drawings showing locations, extent and installation details of corner guards. Show methods of attachment to adjoining construction.
- D. Samples for verification purposes: Submit the following samples, as proposed for this work, for verification of guard.
 - 1. 12" (304.8mm) long sample of each model specified.
- E. Product test reports from a qualified independent testing laboratory showing compliance of each component with requirements indicated.
- F. Maintenance data for wall protection system components for inclusion in the operating and maintenance manuals specified in Division 1.

1.04 Quality Assurance

- A. Installer qualifications: Engage an installer who has no less than 3 years experience in installation of systems similar in complexity to those required for this project.
- B. Manufacturer's qualifications: Not less than 5 years experience in the production of specified products and a record of successful in-service performance.
- C. Single source responsibility: Provide all components of the wall protection system manufactured by the same company to ensure compatibility of color, texture and physical properties.

1.05 Delivery, Storage, and Handling

- A. Deliver materials to the project site in unopened original factory packaging clearly labeled to show manufacturer.
- B. Material must be stored flat.

1.06 Project Conditions

- A. Installation areas must be enclosed and weatherproofed before installation commences.

Part 2 - Products

2.01 Manufacturers

- A. Construction Specialties, Inc., Muncy, Pa., Mississauga, Ontario.

2.02 Materials

- A. Stainless steel: To be type 304 alloy with #4 satin finish.
- B. All necessary fasteners to be supplied by the manufacturer.

2.03 Corner Guards

- A. Stainless steel corner guards to be by Construction Specialties: Surface mounted guards to be 16 gauge stainless steel.
 - 1. Model CO-8 90° Stainless steel corner guard with 3 1/2" (88.9mm) legs. Mounted with construction adhesive standard, stainless steel screws optional. Available in 4' (1.2m), 8' (2.4m) and 10' (3.0m) heights. Available in variable angles. For end wall conditions specify model SCO-8

2.04 Fabrication

- A. General: Fabricate wall protection systems to comply with requirements indicated for design, dimensions, detail, finish and member sizes.
- B. Preassemble components in shop as much as possible to minimize field assembly.

2.05 Finishes

- A. General: Comply with NAAMM "Metal Finishes Manual" for recommendations relative to applications and designations of finishes.

Part 3 - Execution

3.01 Examination

- A. Verification of conditions: Examine areas and conditions under which work is to be performed and identify conditions detrimental to proper or timely completion.
 - 1. Do not proceed until unsatisfactory conditions have been corrected.

3.02 Preparation

- A. Surface preparation: Prior to installation, clean substrate to remove dirt, debris and loose particles. Perform additional preparation procedures as required by manufacturer's instructions.
- B. Protection: Take all necessary steps to prevent damage to material during installation as required in manufacturer's installation instructions.

3.03 Installation

- A. Install the work of this section in strict accordance with the manufacturer's recommendations, using only approved mounting hardware, and locating all components firmly into position, level and plumb.

3.04 Cleaning

- A. General: Immediately upon completion of installation, clean material in accordance with manufacturer's recommended cleaning method.
- B. Remove surplus materials, rubbish and debris resulting from installation as work progresses and upon completion of work.

3.05 Protection

- A. Protect installed materials to prevent damage by other trades. Use materials that may be easily removed without leaving residue or permanent stains.