

INVIGOR RIALTO

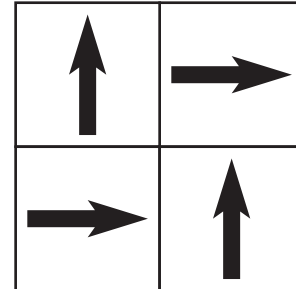
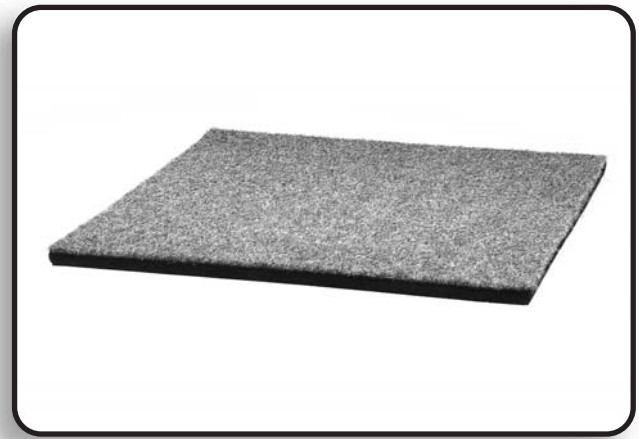
Anti-Fatigue Flooring

Technical Data

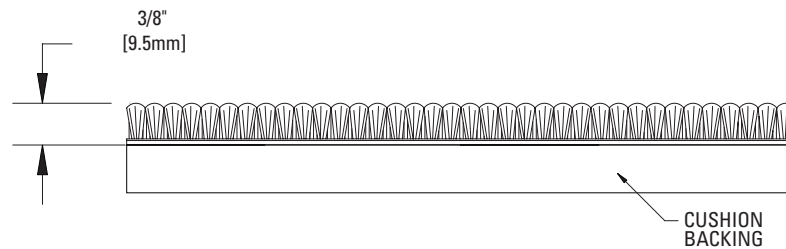
- 3/8" (9.5mm) Carpet Depth
- Closed Cell, Blown Rubber Cushion Backing
- Carpet Face Weight: 26oz/yd² (.88kg/m²)

Options

- Anti-Fatigue Backing Available in:
1/4" (6.4mm), 3/8" (9.5mm), or 1/2" (12.7mm)
- 4 Colors Available
- Rolls, Tiles & Custom Matting Available
- Pressure Sensitive Releasable Adhesive
- Sigway Releasable Fabric Adhesive Available
- Surface & Recessed Mounted Frames Available



Quarter Turn Installation



SECTION

Series 2005

©COPYRIGHT 2005 CONSTRUCTION SPECIALTIES, INC.

Texture



Rolls: 6'7" or 13'2" X 50'
(2.00m or 4.00m X 15.24m)



Tiles: 19 1/16" X 19 1/16"
(500.00mm X 500.00mm)



Custom Mats:
Up to 13'2" X 50'
(4.00m X 15.24m)
1.5" Heavy Duty Trim



GRANDENTRANCE

www.grand-entrance.com
(888)424-6287

Grand Entrance Specifications Model: Invigor Rialto

**SUGGESTED SPECIFICATION
SECTION 09620
SPECIALTY FLOORING**

PART 2 PRODUCTS

2.01 MANUFACTURERS

A. DRAWINGS AND SPECIFICATIONS ARE BASED ON MANUFACTURER'S LITERATURE FROM GRAND ENTRANCE (888)424-6287 UNLESS OTHERWISE INDICATED. OTHER MANUFACTURERS MUST COMPLY WITH THE MINIMUM LEVELS OF MATERIAL AND DETAILING INDICATED ON THE DRAWINGS AND SPECIFIED HEREIN.

2.02 MATERIALS

- A. 100% POLYPROPYLENE CARPET FIBERS
- B. BITUMEN PRIMARY BACKING (TILES ONLY), GEL FOAM RUBBER PRIMARY BACKING (ROLLS AND MATS ONLY)
- C. CLOSED CELL, BLOWN RUBBER CUSHION SECONDARY BACKING

2.03 FLOOR MAT

(CHOOSE FROM TILES, ROLL GOODS OR MATS AND DELETE OTHERS)

- A. TILES - MODEL AND DESCRIPTION - INVIGOR RIALTO TILES SHALL BE MANUFACTURED FROM 100% POLYPROPYLENE FIBERS AND A PRIMARY BACKING MADE FROM BITUMEN. A CARPET FACE WEIGHT OF 26-OZ/YD² (.88KG/M²). TILE DIMENSION TO BE 19 11/16" X 19 11/16" (501.65MM X 501.95MM). SECONDARY BACKING TO BE (CHOOSE ONE DELETE OTHERS) 1/4", 3/8", OR 1/2" DEPTH, CLOSED CELL, BLOWN RUBBER CUSHION MATERIAL FOR EXTENDED PRODUCT LIFE. SIXTEEN TILES PER CASE.
- B. ROLL GOODS - MODEL AND DESCRIPTION - INVIGOR RIALTO ROLL GOODS SHALL BE MANUFACTURED FROM 100% POLYPROPYLENE FIBERS AND A RUBBER PRIMARY BACKING. CARPET FACE WEIGHT OF 26-OZ/YD² (.88KG/M²). TILE DIMENSION TO BE 19 11/16" X 19 11/16" (501.65MM X 501.95MM). SECONDARY BACKING TO BE

(CHOOSE ONE DELETE OTHERS) 1/4", 3/8", OR 1/2" DEPTH, CLOSED CELL, RUBBER CUSHION FOR EXTENDED PRODUCT LIFE.

C. MATTING - MODEL AND DESCRIPTION - INVIGOR RIALTO MATS SHALL BE MANUFACTURED FROM 100% POLYPROPYLENE FIBERS AND A PRIMARY BACKING MADE OF RUBBER WITH A HEAVY-DUTY VINYL EDGING. A CARPET FACE WEIGHT OF 26-OZ/YD² (.88KG/M²). SECONDARY BACKING TO BE (CHOOSE ONE DELETE OTHERS) 1/4", 3/8", OR 1/2" DEPTH, CLOSED CELL, BLOWN RUBBER CUSHION FOR EXTENDED PRODUCT LIFE.

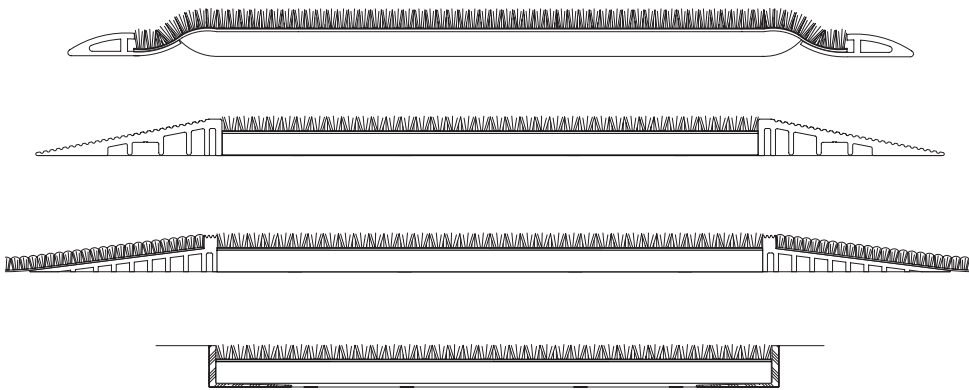
2.04 MAT FRAME

- A. SM TAPERED VINYL FRAME SHALL BE 1" (25.4MM) WIDE, WITH TAPERED LEAD-IN EDGE FOR SURFACE MOUNTED APPLICATIONS. COLOR BLACK.
- B. TA TAPERED ALUMINUM FRAME SHALL BE 6063-T5 ALUMINUM ALLOY AND PERMANENTLY POSITIONS MAT FOR SURFACE MOUNTED APPLICATIONS. CHOOSE FROM MILL (STANDARD) OR ONE OF 9 OPTIONAL COLORS AS OFFERED BY MANUFACTURER. (CALL FACTORY FOR CUSTOM COLORS.) CHOOSE FROM ANODIZED OR HEAVY-DUTY POWDER COAT FINISH. NOTE: MILL FINISH FRAMES IN CONTACT WITH CONCRETE TO BE PRIMER COATED.
- C. PS PIPESTEM FRAME SHALL BE A RECESSED FRAME IN 6063-T5 ALUMINUM ALLOY WHICH CREATES A RECEIVER FOR SURROUNDING HARD SURFACE FLOOR PRODUCTS OR ADDITIONAL PEDISYSTEMS MATTING. CHOOSE FROM MILL (STANDARD) OR ONE OF 9 OPTIONAL COLORS AS OFFERED BY MANUFACTURER. (CALL FACTORY FOR CUSTOM COLORS.) CHOOSE FROM ANODIZED OR HEAVY-DUTY POWDER COAT FINISH. NOTE: MILL FINISH FRAMES IN CONTACT WITH CONCRETE TO BE PRIMER COATED.
- D. TNG TAPERED ANGLE FRAME (SPECIFIER NOTE: THE TAPERED ANGLE FRAME IS FOR USE WHEN ADDITIONAL SCREED FOR LEVEL BASE IS NOT NECESSARY.) SHALL BE A

RECESSED FRAME IN 6063-T5 ALUMINUM ALLOY. FRAME COLOR SHALL BE SUPPLIED IN MILL (STANDARD) OR ONE OF 9 OPTIONAL COLORS AS OFFERED BY MANUFACTURER. (CALL FACTORY FOR CUSTOM COLORS.) CHOOSE FROM ANODIZED OR HEAVY-DUTY POWDER COAT FINISH. NOTE: MILL FINISH FRAMES IN CONTACT WITH CONCRETE TO BE PRIMER COATED.

2.05 ADHESIVES

- (SELECT ONE DELETE OTHERS)
- A. PERMANENT OUTDOOR ADHESIVE - AN ENVIRONMENTALLY FRIENDLY, LOW VOC ADHESIVE AVAILABLE IN ONE-GALLON CONTAINERS. APPROXIMATE COVERAGE AREA IS 150-FT²/ GALLON.
- B. PRESSURE SENSITIVE RELEASABLE ADHESIVE - AN ENVIRONMENTALLY FRIENDLY, LOW VOC RELEASABLE ADHESIVE AVAILABLE IN ONE-GALLON CONTAINERS. APPROXIMATE COVERAGE AREA IS 150-FT²/ GALLON.
- C. SIGAWAY TAPE - A 19 11/16" WIDE BY 82' 6" ROLL OF PRESSURE SENSITIVE (2" WIDE X 82' 6" ROLLS AVAILABLE), DOUBLE SIDED TAPE WHICH ALLOWS ADHESION TO THE SUBSTRATE AND THE CARPET BACKING. CARPET MAY BE REPLACED EASILY BY CUTTING THE PERIMETER OF DAMAGE MODULES. APPROXIMATE COVERAGE AREA IS 134-FT²/ ROLL (19 11/16" WIDE TAPE).



**Surface Mounted
Vinyl Frame**

**Surface Mounted
Tapered Aluminum Frame**

**Surface Mounted
Pipestem Frame**

**Recessed
Tapered Angle Frame**